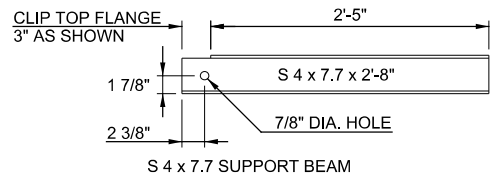


STANDARD INLET DEPTH	
INLET W/SMALL JUNCTION BOX	2'-8" FOR 18" R.C.P. & 28 1/2" x 18" REINF. CONC. ARCH PIPE 3'-2" FOR 24" R.C.P. & 36 1/2" x 22 1/2" REINF. CONC. ARCH PIPE 3'-8" FOR 30" R.C.P. & 43 1/2" x 26 3/8" REINF. CONC. ARCH PIPE 4'-2" FOR 36" R.C.P. & 58 1/2" x 36" REINF. CONC. ARCH PIPE
W/LARGE JUNC. BOX	4'-8" FOR 42" R.C.P. 5'-2" FOR 48" R.C.P.



DOUBLE GRATE SUPPORT BEAM DETAILS
NOTE: S 4 x 7.7 SUPPORT BEAM(S) SHALL BE CONNECTED TO DOUBLE GRATE SUPPORT BEAMS USING CONNECTION ANGLES & 3/4" x 2" MACHINE BOLTS & NUTS AS REQUIRED.

- GENERAL NOTES**
- ALL CONSTRUCTION AND MATERIAL REQUIREMENTS SHALL BE IN ACCORDANCE WITH THE 2009 ODOT STANDARD SPECIFICATIONS.
 - WHEN THE INLET IS BUILT IN NEW CONCRETE PAVEMENT, THE APRON AROUND THE INLET MAY BE BUILT INTEGRAL WITH PAVEMENT, OR SEPARATELY. THE THICKNESS SHALL BE THE SAME AS THE CONCRETE PAVEMENT OR CURB AND GUTTER, IF CONSTRUCTED IN ANY OTHER AREA OR IN EXISTING PAVEMENT. THE APRON AROUND THE INLET SHALL BE BUILT OF P.C. CONCRETE TO A MINIMUM 8 INCH THICKNESS.
 - THERE WILL BE NO DEDUCTION OF PAYMENT FOR CONCRETE CURB AND GUTTER OR P.C. CONCRETE THRU THE EXTENTS OF THE CAST IRON CURB HOODS. DEDUCTION WILL BE MADE FOR PAYMENT ON INTEGRAL CURB THRU THE EXTENTS OF THE CAST IRON CURB HOODS.
 - VARIOUS DETAILS NOT SHOWN ON THIS SHEET, SHALL BE CONSTRUCTED AS SHOWN ON ROADWAY STANDARD C1-1, INCLUDING THE SUMP IN THE ROADWAY PAVING APRON. THE CONNECTION OF CAST IRON HOODS TO ANGLE IRON, AND THE CONNECTION OF CAST IRON HOODS TO THE INLET FRAMES.
 - PRICE BID FOR INLET W/JUNCTION BOX, SHALL INCLUDE ALL COST OF MATERIALS AND LABOR ASSOCIATED WITH UNCLASSIFIED EXCAVATION, STRUCTURAL EXCAVATION, CLASS A CONCRETE, REINFORCING STEEL, MANHOLE FRAME & COVER, INLET FRAMES & GRATES, CURB HOODS, CONNECTION ANGLES, CONNECTION BOLTS AND SUPPORT BEAMS.

BASIS OF PAYMENT		
ITEM NO.	ITEM	UNIT
611 (G)	INLET W/SMALL JUNCTION BOX (■)	EA.
611 (G)	INLET W/LARGE JUNCTION BOX (■)	EA.
611 (H)	ADD'L DEPTH IN INLET W/SML. JUNCT. BOX (■)	V.F.
611 (H)	ADD'L DEPTH IN INLET W/LRG. JUNCT. BOX (■)	V.F.

- INLET DESIGN AND CURB DESIGNATION SHALL BE SPECIFIED, I.E. DESIGN 1(B) or 2(STD.)
- THE INLET DESIGN NO. SHALL BE SPECIFIED, I.E. DESIGN 1, 2 OR 3.

DESIGN	KBA	MMP	OKLAHOMA CITY BOULEVARD	OKLAHOMA CO.
DRAWN	ISFM	RWH	OKLAHOMA DEPARTMENT OF TRANSPORTATION	
CHECKED	KBA			
APPROVED				
SQUAD	MacArthur		DETAIL OF CURB INLET W/ JUNCTION BOX	
STATE JOB NO. 17428(88)				

PRINT DATE: 8/11/2017 T:\1024-05\Drawings\Roadway\1024-05-Inlet_Junk_Box.dwg